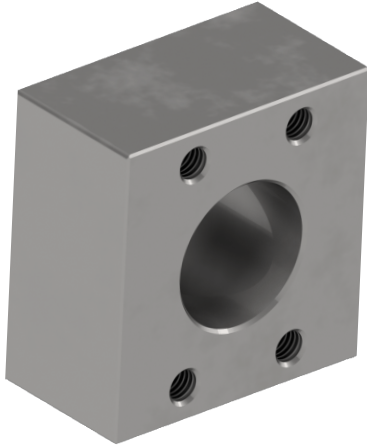


# F3C/F6C Connector Block

Joins two standard SAE 4-bolt O-Ring flanges or split flange heads.



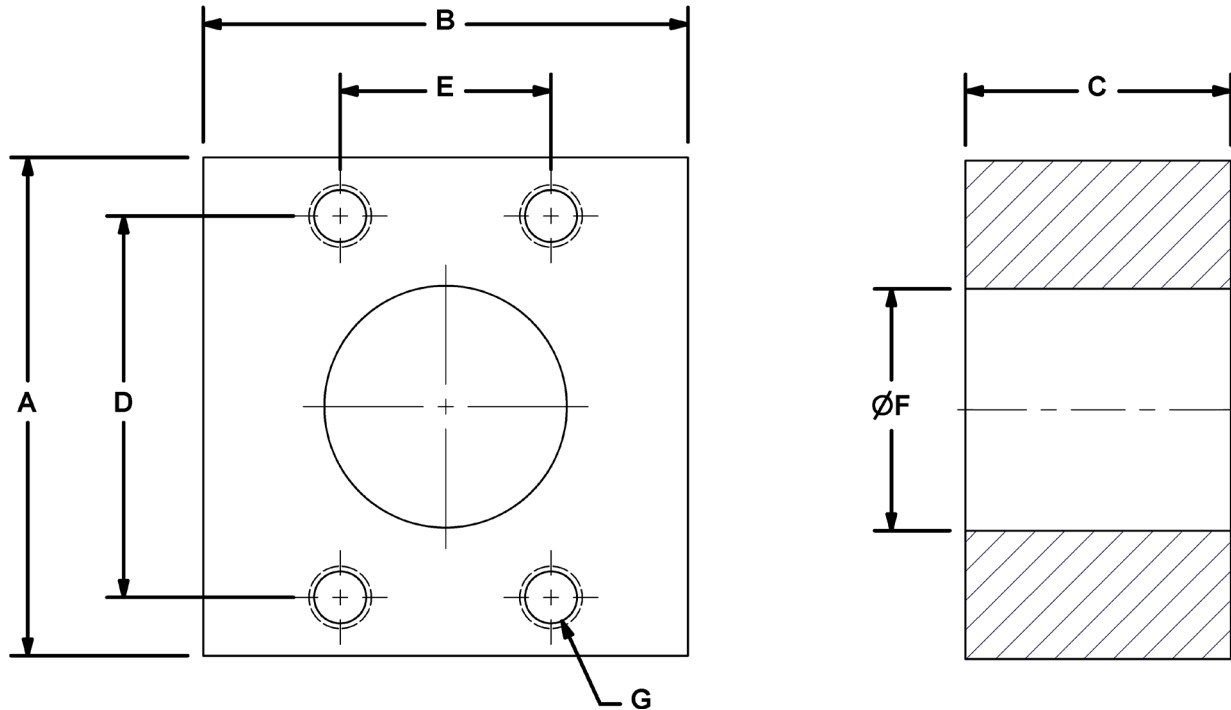
F3C (C.61) and F6C (C.62) connector blocks offer companion (flat face) SAE 4-bolt UNC connections on opposing sides to facilitate the union of standard SAE 4-bolt thru-hole O-Ring flanges.

- Versions for SAE Code 61 and SAE Code 62.
- Carbon steel or stainless steel construction.
- Simplifies hydraulic line connectivity.
- Gender changer for standard SAE flanges and split flange heads with O-Ring groove.
- Supplied with 2 O-Rings

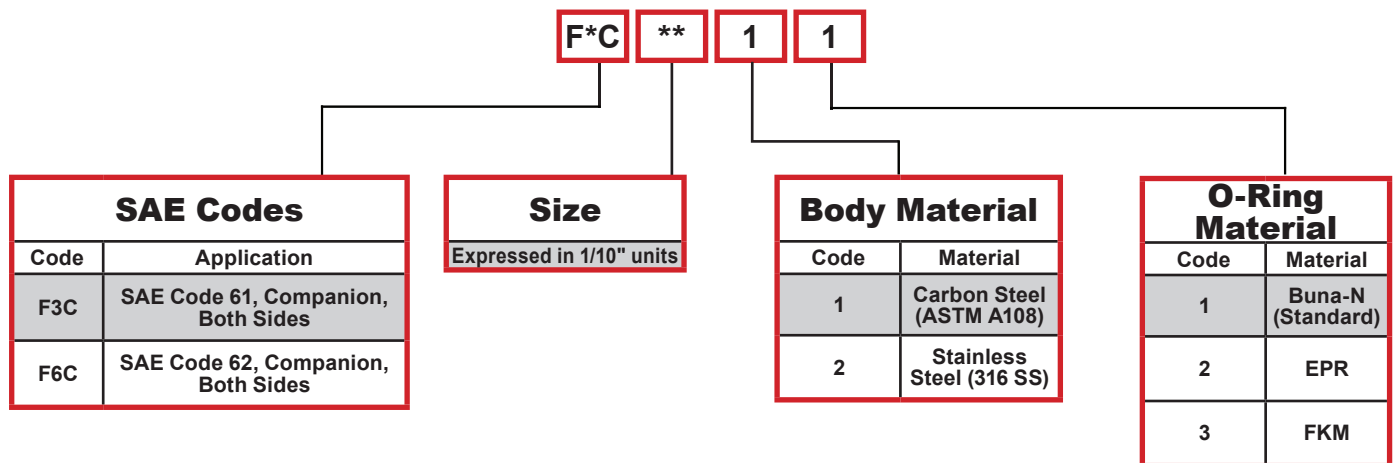
F3C Code 61 Connector Block Dimensions								
Dimensions (in)	Working PSI	A	B	C	D	E	F	G
Size Code		Overall Height	Overall Width	Overall Thickness	FLG Pad Long	FLG Pad Short	Bore Size	UNC Thru
05	5,000	2.25	2.00	1.69	1.50	0.69	0.50	5/16"
07	5,000	2.75	2.25	1.88	1.87	0.87	0.75	3/8"
10	5,000	3.00	2.50	1.88	2.06	1.03	1.00	3/8"
12	4,000	3.50	3.00	2.06	2.31	1.19	1.25	7/16"
15	3,000	4.00	3.50	2.25	2.75	1.41	1.50	1/2"
20	3,000	4.17	4.00	2.25	3.06	1.69	2.00	1/2"
25	2,500	4.50	4.50	2.25	3.50	2.00	2.50	1/2"
30	2,000	5.50	5.50	2.50	4.19	2.44	3.00	5/8"
35	500	6.00	6.00	2.50	4.75	2.75	3.50	5/8"
40	500	6.57	6.00	2.50	5.13	3.06	4.00	5/8"
F6C Code 62 Connector Block Dimensions								
Dimensions (in)	Working PSI	A	B	C	D	E	F	G
Size Code		Overall Height	Overall Width	Overall Thickness	FLG Pad Long	FLG Pad Short	Bore Size	UNC Thru
05	6000 PSI	2.25	2.00	1.75	1.59	0.72	0.50	5/16"
07		3.00	2.00	2.00	2.00	0.94	0.75	3/8"
10		3.50	3.00	2.25	2.25	1.09	1.00	7/16"
12		4.00	3.00	2.06	2.63	1.25	1.25	1/2"
15		4.50	3.00	2.88	3.13	1.44	1.50	5/8"
20		5.43	4.00	3.13	3.81	1.75	2.00	3/4"
25		7.08	6.00	4.25	4.87	2.31	2.50	7/8"
30		8.50	7.00	4.88	6.00	2.81	3.00	1 1/8"



# F3C/F6C Connector Block



## Ordering Codes Summary



**Note:** Changes from Standard Materials may result in changes to temperature and/or pressure rating.

Due to our policy of continual product improvement, the specifications in this catalog may change without notice. When designing by spec, please request a certified print.

